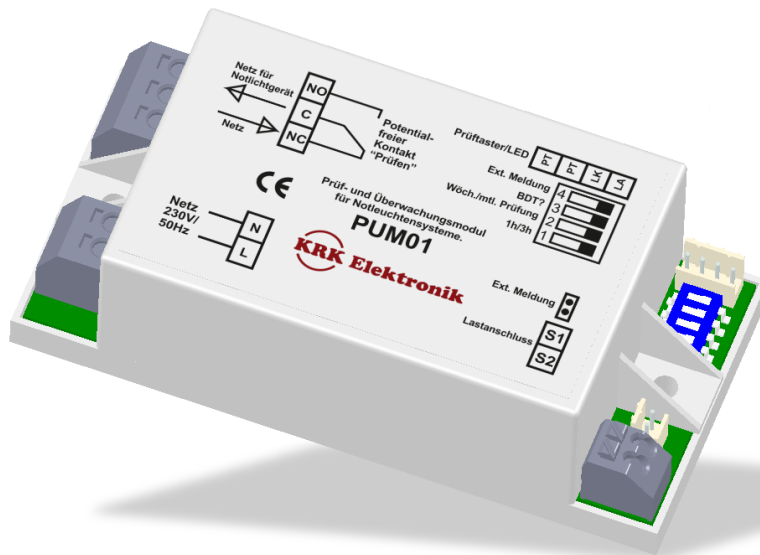


Product data sheet

Product: PUM01



Description:

Self-monitoring and automatic testing of emergency light units are a must today. Additional equipment must be used for older systems or devices in order to achieve the functions. PUM01 fulfils these prerequisites precisely.

By means of a potential-free switching contact (durable up to 10 A), the connected emergency light devices are switched in test mode. As a rule, the supply voltage to the device under test is interrupted (emergency mode) and the function is checked. The function is checked using a current sensor, which electrically monitors the current flow in the lamp circuit. Moreover, a permanent check is conducted for the ambient temperature. If it exceeds 80°C, it is signalled as an error. A connection for an external notification of the emergency light device ensures further control possibility. The device is supplied with a test button, duo-LED and connecting cable for external notification.

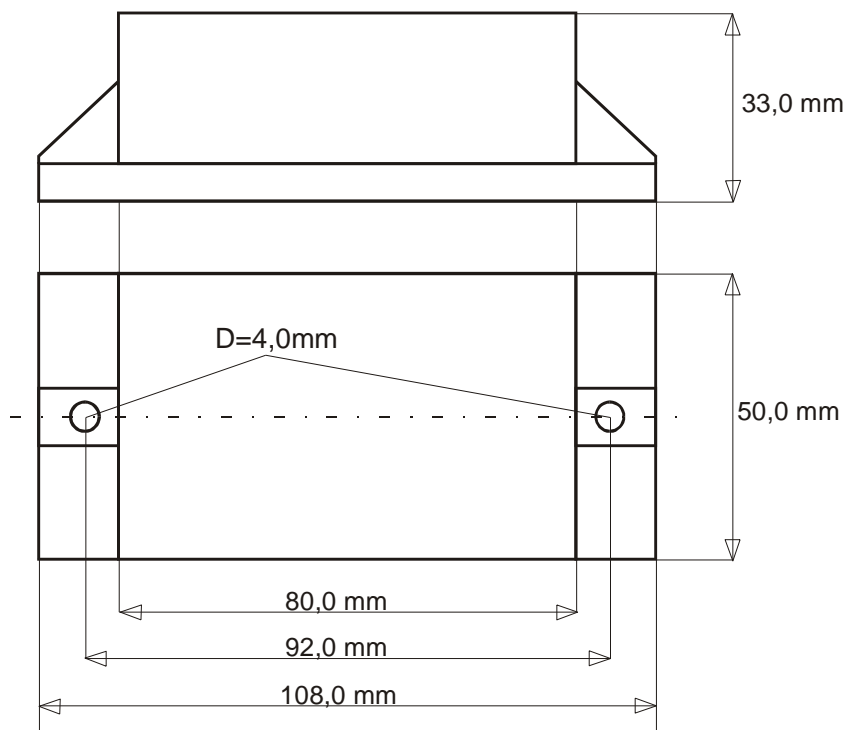
Following functions are integrated:

- **Function programming.** Using a 4-pole DIP switch, the desired functionality can be set:
 - Capacity of emergency light unit 1 h / 3 h
 - Weekly or monthly test cycle
 - Annual operation endurance test
 - external notification monitoring in different versions
- **TESTING.** Manual triggering, then automatic weekly or monthly testing.
- **OPERATION ENDURANCE TEST.** Takes place automatically during activation.
- **OPTICAL ERROR MESSAGE** All the states or errors of the emergency light device are displayed using a two-colour LED.

Technical data:

Supply voltage	230 V / 50 Hz
Connected wattage	Maximum 10 A (2 kW) at contact.
Operating temperature when $t_u = 20^\circ\text{C}$	Approximately 23°C
Operating temperature range (t_a)	-20°C to $+40^\circ\text{C}$
Maximum permissible Operating temperature	$+70^\circ\text{C}$
Consumption	max. 1.8 VA (with switched relay)

Dimensions:



Error displays:

Display	Definition	Duration
LED turns green	no error, mains operation	
LED flashes green	Light is in test mode or operation endurance test.	test runs for as long as the check
LED flashes red (1x / second)	Lamp signals capacity error of emergency power supply	till error is rectified
LED flashes red (2x / second)	External source error.	till error is rectified
LED flashes red (3x / second)	Light is signalling temperature error. Internal temperature of lights $> 80^\circ\text{C}$	till error is rectified
LED flashes red (4x / second)	Light is signalling lamp failure (no indicator lamp connected or short-circuit)	Till error is rectified

Accessories:

- LED / test button combination of PT-LED-4 (button and duo-LED separated) with connecting cable and plug.
- LED / test button combination of membrane keys 20 x 20 mm
- LED / test button combination of PT-LED4/1x4 (button / LED combination) with connecting cable and 1 4-pole plug.
- LED / test button combination of PT-LED4/2x2 (button / LED combination) with connecting cable and 2 2-pole plug.
- LED / test button combination of IP54 PT-LED-4 (button and duo-LED separated) with connecting cable and plug. Button in IP54 design.

Order numbers:

Name	Description	Order number
PUM01	Testing and monitoring module for external emergency lights	109-3004-1400
PT-LED4	LED / testing button combination	109-1036-2000
PT-LED4/1x4	LED / testing button combination	109-1036-0200
PT_LED4/2x2	LED / testing button combination	109-1036-0100
IP54 PT-LED	LED / testing button combination	109-1036-1600

Circuit diagram:

