

Product data sheet

EmLOC central unit EZ3



EZ3 is a central monitoring and control equipment for up to 999 EmLOC end devices.

Thanks to the EmLOC system, substation or intermediate station is not required. All the end devices are directly connected via 2-wire data bus.

The central unit is fully functioning after activating mains. Only the number of connected devices (addresses) and if necessary the time of the automatic test must be corrected on-site.

Technical data:

Input voltage / frequency	230 V / 50 Hz
Safety class	IP54
Housing material	Impact-resistant polystyrene
Ambient temperature	-10 to +65 °C (tc max = 70°C)
Power consumption	max. 14 W
Weight	1.8 kg
Dimensions LxBxH (in mm)	54 x 18 x 89

Order numbers:

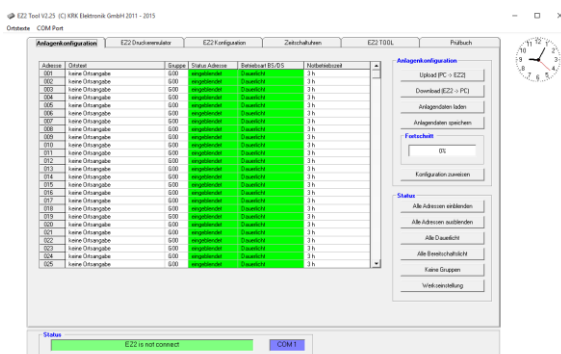
Name	Description	Order number
EZ3	EmLOC central unit for wall-mounting	109-3004-0310
EZ3-WEB	EmLOC central unit for wall-mounting with web server	109-3004-0340
EZ3-NLB	EmLOC central unit for wall-mounting with switch option "NLB"	109-3004-0315

Properties

- no substation or intermediate station necessary! All the end devices are directly connected in **parallel** using a 2-wire bus.
- automatic function test (daily, weekly or monthly).
- manual function test for individual or all end devices.
- programmable automatic operation endurance test.
- manual operation endurance test for individual or all end devices.
- manual status request of individual end devices with type detection.
- 3-digit address coding (001-999 or ALL).
- illuminated LCD display with 2 lines for every 40 alphanumeric characters.
- Ten-key pad with letter function for data entry.
- Function keys for menu control and manual functions.
- Test times adjustable to the exact minute.
- It is possible to print the status information about all or individual end devices, test results, system settings and test records using an external printer (optionally).
- Serial interface RS232 for PC and printer connection. Bluetooth optional.
- Converter operation possible for PC central unit (visualisation).
- EmLOC bus connection 2-wire for parallel connection of all end devices.
- potential-free switch contact for collective fault.
- Test report for storing results for up to 11 years.
- Configuration of system and EZ comfortably via PC software EZ tool.
- individual addresses can be displayed or hidden.
- Separate group addresses for light groups.
- Operating mode (BS/DS) programmable via central unit.
- Steady light switchable via central unit (depending on the end devices).
- Operating time of every single address can be programmed via the central unit.
- 20 timers for controlling the steady light functions and emergency light blocking. They can address individual addresses, address groups or the complete system.
- Bus watchdog function for troubleshooting.
- Emergency light blocking during free times.
- Detailed status display of EmLOC devices with all the device parameters
- Software update of EZ via serial interface
- In association with the free visualisation software applicable as EmLOC converter.
- Multilingualism (can be selected in system menu)
- Summertime / wintertime change-over automatic or can be disabled
- Web server option. Parameter setting analogous to EZ tool.
- Optional emergency light blocking via potential-free switch

Free software (in download area of KRK website):

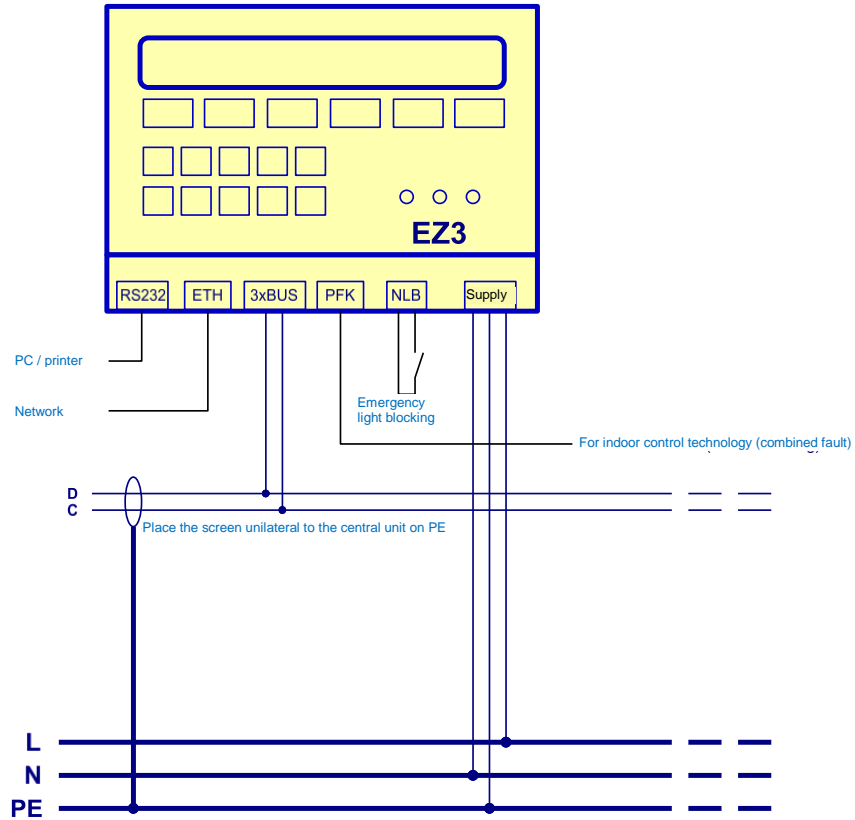
EZ-Tool



PC-central unit



Connection diagram:



Housing dimensions:

